

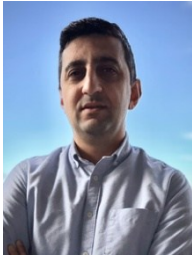




XXXVIII Cycle – PhD Defense

January 26th, 2026 – “Sala Consiliare” – Via Branze 38 – Brescia

meet.google.com/iea-nizi-mea

XXXVIII Cycle

Time	PhD Candidate
10.10 AM	BIANCO Antonio <i>‘Monitoring of salivary and urinary pH with an external device in order to improve eating habits: a pilot study.’</i> Prof. Corrado Paganelli
10.30 AM	 BONFITTO Giuseppe Roberto <i>‘Integrating artificial intelligence into diagnostic imaging: from AI-driven simulation and quantitative imaging to personalized contrast administration in CT.’</i> Prof. Alberto Signoroni
10.50 AM	 CONTRO Giacomo <i>‘Intraoperative Surgical Navigation as a Precision Medicine Tool in Sinonasal and Craniofacial Oncologic Surgery.’</i> Prof. Marco Ferrari, Prof. Corrado Paganelli
11.10 AM	 COPPOLA Edoardo <i>‘From Explainable and Robust Design to Scalable Foundation Models: A Technical Journey towards Trustworthy Medical AI.’</i> Prof. Alberto Signoroni, Dr. Mattia Savardi



11.30 AM

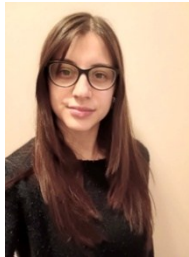


GARGIONI Luigi

'Human-robot collaboration in healthcare: new programming and interaction techniques.'

Prof. Daniela Fogli, Prof. Pietro Baroni

11.50 AM



MARCOTTO Giulia Sofia

"iPSC-based platforms for exploring the effects and mechanisms of exogenous electrical stimulation in dopaminergic neurons and generating personalized in-vitro models of neurodegenerative and psychiatric disorders."

Prof. Emilio Sardini, Prof.ssa Luigia Collo

12.10 AM



MOSSO Martina

'Integrated biomechanical frameworks in occupational settings: bridging functional assessment and human-exoskeleton interaction.'

Prof. Nicola Lopomo, Dott.ssa Emilia Scalona

12.30 AM



PACHAIAPPAN Praveena

'Development of a new sustainable materials from the ashes produced by a fluidized bed mono-combustion plant of biological sew.'

Prof.ssa Elza Bontempi, Prof. Carlo Punta